



COLLEGE *of*
COASTAL
GEORGIA

F O U N D A T I O N

2018 Annual Report
Focusing on Student Success





COLLEGE *of* COASTAL GEORGIA

2018 Foundation Annual Report

Table of Contents

Letter from the President and Board Chair.....	4
Foundation Impact.....	6
Foundation Members.....	7
<i>Focusing on Corporate Sponsorships.....</i>	<i>11</i>
<i>Focusing on Athletic Scholarships.....</i>	<i>13</i>
<i>Focusing on Scholarships.....</i>	<i>14</i>
<i>Focusing on Service-Learning.....</i>	<i>17</i>
<i>Focusing on Faculty Development.....</i>	<i>18</i>
<i>Focusing on Community Outreach.....</i>	<i>19</i>
<i>Focusing on the Camden Center</i>	<i>20</i>
<i>In Memoriam Jack A. Dinos.....</i>	<i>21</i>
2018 Contributors.....	22
Fiscal Report.....	28

Letter from the President and Board Chair

Dear Friends and Supporters,

It is amazing what can be accomplished with a clear focus. In 2018, the College of Coastal Georgia Foundation focused its considerable efforts on promoting student success and enriching the Mariner community. Whether it was making tuition more affordable for students, supporting faculty development, adding resources that enrich academic programs, facilitating community dialogue, or equipping the College's athletic teams to compete at a higher level, the Foundation's impact could be felt throughout the College and across the community.

Student success remained the focus of both the College's and the Foundation's efforts. The Foundation awarded scholarships and student support in the amount of \$988,091 in 2018. The generosity of our donors continues to help the College recruit and retain some of institution's best and brightest students.

Foundation trustees played critical roles in the search for the College's new president and provost. Finding the best individuals for these two top leadership roles was the clear focus for everyone on the search and screening committees. Following the successful searches, Foundation trustees were among the first to welcome the College's new president and provost and share their wisdom and encouragement.

It is impossible to reflect on the past year's successes without acknowledging the significant contributions of Interim President Meg Amstutz. We are grateful for all she did to serve the College, the Foundation, and the community throughout her time at the College.

While the focus of an annual report is to look back, we also want to look forward to the remainder of 2019 and the opportunities on the horizon. With your continued support and financial gifts, the Foundation's impact in 2019 can exceed that of 2018.

As you read through this 2018 Annual Report, join us in celebrating all that was accomplished during the past year. As you read the stories of the many ways in which the



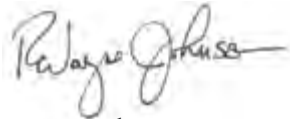
Foundation benefited Coastal Georgia students, we hope you will appreciate the ways your generous support is making a meaningful difference. Finally, please review the Foundation's latest financial information at the conclusion of the report.

On behalf of the entire Mariner family, we offer our sincere gratitude to you for your faithful support of the College of Coastal Georgia through its Foundation.

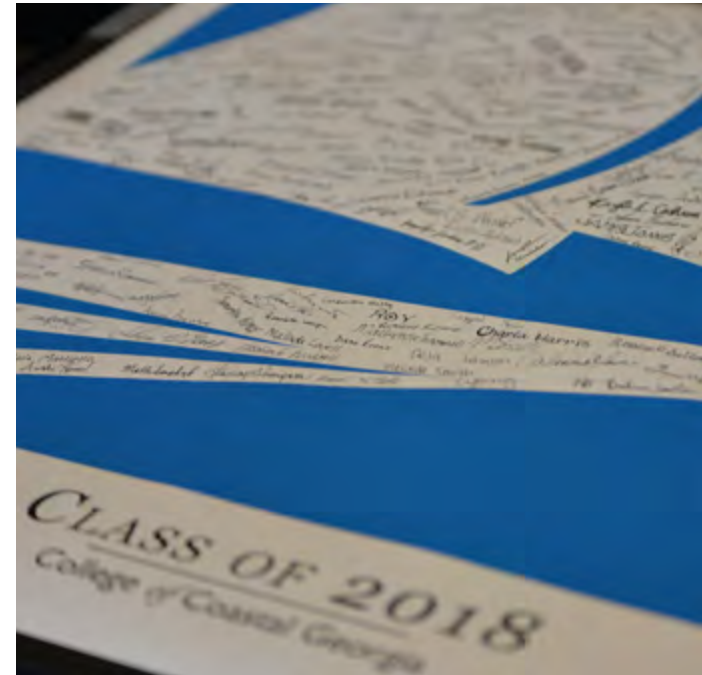
Sincerely,



Michelle R. Johnston, Ph.D.
President
College of Coastal Georgia



Wayne Johnson
Chair
College of Coastal Georgia Foundation



TOGETHER WE MAKE A DIFFERENCE

CONTRIBUTIONS
\$709,372

NUMBER OF DONORS
430

AMOUNT OF STUDENT SUPPORT +
SCHOLARSHIPS AWARDED
\$988,091

ACADEMIC +
INSTITUTIONAL SUPPORT
\$314,130



College of Coastal Georgia

Foundation Board of Trustees

Executive Committee

Wayne Johnson, Chair

Market President, Synovus

Jack Kilgore, Immediate Past Chair

President (Retired), Consumer Brands Division
Rich Products Corporation

Greer Brown, Vice Chair

Sr. Vice President, Financial Advisor
Brown-Rose Wealth Management Group

Susan Imhoff, Secretary

Real Estate Professional
Sotheby's International Realty

Ben Lee, Treasurer

Certified Public Accountant/Managing Partner
Coastal CPAs, LLC

Art Lucas, At-Large

CEO
Lucas Properties

Bill Stembler, At-Large

Chairman/CEO
Georgia Theatre Company

Ex Officio

Michelle R. Johnston, Ph.D.

President
College of Coastal Georgia

Michelle Ham

Interim Vice President for Business Affairs
College of Coastal Georgia

Scott Williamson

Interim Vice President for Advancement
College of Coastal Georgia
Executive Director
College of Coastal Georgia Foundation

The College of Coastal Georgia Foundation was organized more than 40 years ago and serves to develop resources to support the College in providing quality educational opportunities. By investing in student scholarships, academic programs, campus programming, and intercollegiate athletics, the Foundation creates the conditions under which our students can thrive in pursuit of their educational goals.

College *of* Coastal Georgia

Foundation Board of Trustees 2018-2019

Trustees

Paulo C. Albuquerque

Jeff Barker

Brenda Boone-Cove

James Greer Brown

David L. Burch

Markisha Butler

John I. Crews, Jr.

Marie W. Dodd

Orion L. Douglass, Sr.

Christine G Franklin

Heard Galis

F. Alton Garrett

William R. Gussman

Tres Hamilton

James Holler, III

Charles T. Hopkins, III

Susan Imhoff

R. Wayne Johnson

Cedric King

Stephen V. Kinney

Janice Lamattina

Abra W. Lattany-Reed

C.H. Leavy, IV

Ben P. Lee

Arthur M. Lucas

Meredith Magnus

Howard Mann

Scott McQuade

Richard W. Moore

Donald G. Myers

Carol K. Norton

Daren B. Pietsch

John J. Rogers

Bert Roughton

Michael D. Scherneck

Barbara Smith

Scott K. Steilen

William J. Stembler

Hillary S. Stringfellow

Catina Tindall

Lance Toland

Nancy Wainwright

Thomas Walden

David A. Zimmerman

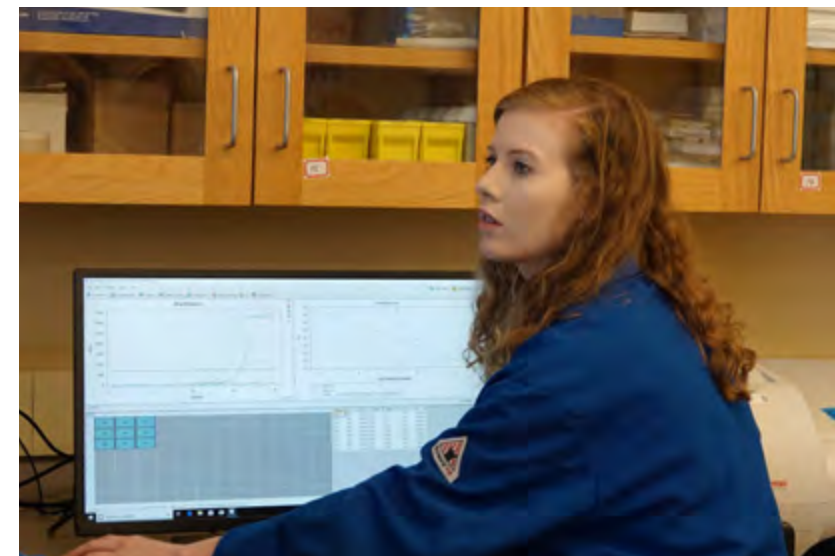


“Having a vibrant college and vibrant facilities, and then cutting-edge technology—that’s what’s going to drive kids to want to stay here. And it will hopefully continue to bring new jobs here, new industry, and our community will continue to grow.”

— Paulo Albuquerque



Georgia Power Company Brunswick Area Manager Paulo Albuquerque, left, and College of Coastal Georgia President Michelle Johnston, right, look on as Coastal Georgia students Kelsey Dunman, left, and Amanda Crane demonstrate a PCR machine the college acquired through a grant from the Georgia Power Foundation. Photo by Bobby Haven/The Brunswick News.



Dunman demonstrates the new technology.

Focusing on the Impact of Corporate Sponsorships

Georgia Power Gift Funds New Technology

Students at the College of Coastal Georgia now have access to cutting-edge technology thanks to a grant from the Georgia Power Foundation. The College's School of Arts and Sciences was able to purchase a DNA amplifier machine that will allow biology and biochemistry professors and students to advance their research. The polymerase chain reaction (PCR) machine amplifies DNA in test tubes, thereby providing researchers with more precise data.

According to Assistant Professor of Biology Dr. Holly Nance, the new machine will improve the quality of student research.

A grant from the Georgia Power Foundation funded the purchase of the new technology as well as trips for students to present their research at conferences.

Foundation Trustee Paulo Albuquerque, area manager for Georgia Power, attended a demonstration of the new equipment. Following the demonstration, he explained the important reason behind Georgia Power's gift.

"Having a vibrant college and vibrant facilities, and then cutting-edge technology — that's what's going to drive kids to want to stay here," he said. "And it will hopefully continue to bring new jobs here, new industry, and our community will continue to grow."

According to President Michelle Johnston, corporate partners like Georgia Power are making a big difference in the lives of students through their gifts to the College. "Coastal Georgia is a unique place that affords students unique opportunities. Most students at large research universities wouldn't get to touch technology like the PCR machine until graduate school. Georgia Power is making it possible for Mariners to get hands-on experience with this technology alongside of dedicated faculty members. I couldn't be more grateful."



Dr. Holly Nance speaks with Dunman.



Focusing on Athletic Scholarships

A Winning Year for the Mariners

The ability of the College to recruit and retain talented student-athletes is significantly enhanced by the generosity of donors. Our student-athletes have many choices about where to attend college. Athletic scholarships often make Coastal Georgia a more attractive option for talented prospective student-athletes. Donor support allows the College to provide a high-quality education and competitive athletic experience to many who might otherwise not be able to afford higher education—or who might have to study elsewhere. Our student-athletes are not only supported financially, but also are supported holistically through access to coaches and mentors, counselors, tutors, and a vibrant collegiate community outside of sports.

Donor support for Athletics at Coastal Georgia goes well beyond scholarships. Donor dollars are used to purchase training equipment and fund travel

to competitions outside of the region. The College's ability to provide these opportunities increases the retention of stellar student-athletes, further establishing the Mariners as highly competitive contenders. In 2018, both the men's and women's golf teams earned team championships in the Coastal Georgia Fall Invitational and the volleyball team earned its fourth conference championship. These are just a few of the achievements of Mariners teams in 2018.

"We have exceptionally talented student-athletes at the College. Our students not only work hard on the court, course, and field but also in the classroom pursuing their degrees," said Dr. William Carlton, Director of Athletics. "Athletic scholarships help us to attract some of the best talent from within the region, across the country, and around the world. Thanks directly to support from the Foundation, we're able to give them a great experience at the College."



Focusing on Scholarships:

The Arthur and Lindee Lucas Fellowship

Fellowship to Benefit Business Students

In August 2018, the Arthur and Lindee Lucas Fellowship was established to assist undergraduate students pursuing a Bachelor of Business Administration (BBA) degree at the College of Coastal Georgia's School of Business and Public Management.

The scholarship, which will first be awarded to a deserving student in Fall 2019, will be given to an applicant who exhibits the skills and spirit of entrepreneurship. To further enhance students' education in business, recipients will be given the opportunity to intern with Lucas Properties on St. Simons Island and be regarded as a "Lucas Fellow."

In order to be considered for a Lucas Fellowship, a student must have completed at least 60 credit hours towards their program of study; have a grade-point average of 3.0 or higher; demonstrated entrepreneurial skills; be enrolled in a minimum of 12 credit hours per semester; and be a resident of Glynn or McIntosh County.

The award will help cover college expenses for the recipients. By this commitment to the success of each recipient, the Lucas Fellowship will be the highest award made to students enrolled in the BBA program.

"We are so grateful to Art and Lindee Lucas for making this scholarship available to students at the School of Business. The fellowship will not only assist students in continuing their education, but recognizes and fosters the skills of entrepreneurship in students," said Dr. William "Skip" Mounts, dean of the School of Business and Public Management and professor of economics. "For students, I believe that becoming a Lucas Fellow will be a very sought-after recognition."





“ The fellowship will not only assist students in continuing their education, but recognizes and fosters the skills of entrepreneurship...”

— Dr. William Mounts



“ We continue to be impressed with how service-learning allows students to creatively apply what they’ve learned in the classroom out in our community.”

— Dr. Kimberly Mannahan



Focusing on Service-Learning

Coastal Georgia Students Make a Positive Impact

The Center for Service-Learning at the College was created in 2010 as a way to connect students, faculty, and the College community to the community at large. The intent of service-learning projects is to collaborate with local agencies to identify community needs in Glynn and surrounding counties and address those needs through student-led projects. These projects are designed to reinforce classroom instruction while providing meaningful service to the community. Students gain a deeper understanding of course content, develop skills in community leadership, and advance their appreciation of social responsibility, global awareness, and diversity. The service-learning program has worked closely with more than 50 community partners including America's Second Harvest of Coastal Georgia, Coastal Georgia Area Community Action Authority, Inc., Georgia Sea Turtle Center, Glynn County School System, Southeast Georgia Health System, St. Marys Children's Theatre, and United Way of Coastal Georgia, Inc.

Service-learning projects are diverse in nature and include such things as nursing students providing free health screenings for the homeless; geology students holding hands-on science activities for "Rocking STEM Day" for the Marshes of Glynn Libraries' Reading Rocks summer program; and culinary students participating in a cook-off to benefit America's Second Harvest Food Bank by creating dishes using ingredients available at the food pantry.

These projects are made possible through mini-grants funded by the Foundation.

"The grants provide resources for our students to purchase supplies during their service-learning projects. A small amount of money can facilitate a large reach into the community," said Dr. Kimberly Mannahan, director of Service-Learning and Undergraduate Research and associate professor of psychology. "We continue to be impressed with how service-learning allows students to creatively apply what they've learned in the classroom out in our community. These projects are enhancing student learning while contributing to the wellbeing of the region."



Focusing on Faculty Development

Investments in Faculty Benefit Students

One of the main duties of faculty members at the College of Coastal Georgia—outside of teaching the next generation of students—is to remain engaged in scholarship within their academic disciplines. Scholarship includes research, creative expression, published work, and sharing new ideas with colleagues, students, and community members.

For many faculty members, their ability to pursue scholarship projects or presentations is only made possible by the generous support of the College of Coastal Georgia Foundation. Dr. Tate Holbrook, associate professor of biology, attended the 2018 Georgia Sea Grant Research Symposium in May at the University of Georgia. He presented an overview of research and service-learning projects he conducted along with coastal ecology students at the College—from surveying insects of threatened coastal habitats to monitoring a living shoreline. Holbrook presented his findings alongside researchers from across the state.

Attending the symposium gave Holbrook an opportunity to network with colleagues; explore future collaborations; discuss potential internships, jobs, and graduate school opportunities for students; and continue to spread the word about the College.

“It’s critical that faculty have the opportunity to go to these conferences for multiple purposes. First, to share the scholarship and the results of research, which allows us to be an active scholar and stay current in our field,” Holbrook said. “It also helps to put the College on the map and let others know what we’re doing here on the coast. That may lead to collaborations or parents encouraging their child to look into the College. It’s part of establishing the reputation of the College as a place where teachers and students are engaged in scholarship.”



Focusing on Community Outreach

Foundation Events Bring the Community to Campus

In 2018, the College of Coastal Georgia Foundation re-launched its Distinguished Speakers Series to great success. Among the highlights of the series was an address by Major General Robert Scales (Ret.), whose distinguished career included 30 years of service in the United States Army. General Scales, a distinguished expert on warfare, delivered an address titled “Stretched Thin ... America’s Military at Risk.”

Scales discussed how technology has changed the nature of warfare in recent decades.

“At the very time when America’s material dominance should have guaranteed our dominance on the battlefield, the tectonic shift of technology has forced armies of the world to fight in a different way,” Scales said.

He expounded on the need for America’s Armed Services to leverage technology to better equip its infantry. One of the most surprising facts Scales shared was that, though comprising just four percent of the U.S. military, infantry members accounted for eighty-one percent of Americans killed in combat since 1945.

According to Scales, relatively small investments in equipment for infantry soldiers—from simple smartphones to remote controlled drones to affordable fixes for a common weapon-jamming issue—could significantly reduce mortality rates among members of the infantry.

Hundreds of people from across campus and the community attended the event.

According to College of Coastal Georgia President Michelle Johnston, thought-provoking events like the Scales presentation provide a real benefit to the Mariner community.

“The Foundation’s Distinguished Speakers Series affords students access to experts on a variety of topics and creates a valuable opportunity to bring members of the community onto campus to introduce them to all that the College has to offer,” said Johnston.



Major General Robert Scales (Ret.) speaks to a diverse crowd at a Distinguished Speakers Series event.

Focusing on the Camden Center

Exploring New Opportunities through the Camden Center

The Camden Center has long been an asset to the College of Coastal Georgia. During 2018, the Foundation gave new attention to how it might support the Camden team and raise awareness of the incredible opportunities available through the Camden Center.

The Foundation's Events and Outreach Committee has worked to strengthen the relationships among the Foundation, the College, and the Kings Bay Chapter of the Military Officers Association of America (KBMOAA). With such a vibrant military community in the area, the Camden Center has much to offer to current and retired military. KBMOAA has also been an asset to the College, supporting scholarships for Coastal Georgia students.

As the Foundation's liaison to the Camden Center Advisory Committee, Trustee Jim Holler, along with several other trustees from the events and outreach committee, attended advisory committee meetings in 2018 to stay abreast of developments, needs, and opportunities related to the Camden Center. One of the strategies that the College is using, and which the Foundation is encouraging to build awareness of and interest in the Camden Center, is to open the facility for community events. Whether it is hosting a job fair, allowing county agencies to hold meetings at the facility, hosting two town hall events for Congressman Buddy Carter, or welcoming audiences to St. Marys Children's Theater performances, the Camden Center has had more than 10,000 unique visitors.

The Foundation has also been involved in helping the College to build relationships with local high schools by inviting students to participate in the dual enrollment program at Coastal Georgia and consider the College post-graduation. Trustee Holler and Events and Outreach Chair Meredith Magnus were part of an important meeting with Charlton High School's principal and guidance counselor, which resulted in a commitment to allow the College to begin recruiting immediately.



In Memoriam

Remembering Jack A. Dinos

In 2018 the Mariner community lost a true giant of generosity. Jack Dinos, a leader in business and philanthropy, was a critical part of the College of Coastal Georgia Foundation during Coastal Georgia's transition from a two- to a four-year college. As the chair of the major gifts committee, he worked closely with trustees and the administration of Coastal Georgia to raise significant resources to fuel the College's transformation. But more than that, he was a driving force for philanthropic growth across Brunswick and the Golden Isles.

Following a successful business career, Dinos retired to the Golden Isles and began a new chapter as one of the area's leading advocates for the College and the wellbeing of the community. Shortly before his passing, Dinos was honored with one of the College's highest honors—the Judge Anthony A. Alaimo Award for Public Service.



2018 Contributors

Visionaries

\$100,000+

David W. and Mary Fox

Benefactors

\$50,000+

Anonymous

Irwin Berman

Southeast Georgia Health System

University System of Georgia Foundation

Leaders

\$10,000+

Marcia and Levi Baisden

Stephen M. Bodolay

Susan and William Gussman

Gail King

Lindee and Arthur Lucas

Luray S. and Newell B. Ward

Smithfield Trust Company

Penny Szwast

Patrons

\$5,000+

Anonymous

Anonymous

James A. and Mary Bishop

Laura and James Brown

Fourteen Black Men of Glynn, Inc.

Georgia Power Foundation Inc.

Gus and Barbara Hernandez

Housing Authority for the City of Brunswick

Patricia Kraft

Reg Murphy

Anne and William Stembler

Sustainers

\$2,500+

Coca-Cola Bottling Company United, Inc.

The Georgia Natural Resources Foundation

Donna and R. Wayne Johnson

Patricia Rugaber

Supporters

\$1,000+

Anonymous

Arthur Pittman & Co.

Donald A. Bethea

Emily Boyle

BPOE Elks Lodge No. 691

Shelan J. Bryson

Patricia L. Buchser

David L. Burch

William B. Carlton

Christ Church Frederica

Coastal Barrier Island Foundation

Susan H. Coleman

Linda F. Cravey

Leigh and Melvin Deese

Department of Family and Children Services

Barbara and Frederick Deratto

Majid Ejlali

Enterprise Holdings Foundation

Christine G. Franklin

Craig Gentzle

GFWC Brunswick Woman's Club

Donnell S. Guthrie

Kay S. Hampton

Carol and Duane Harris

James W. Holler

Sally and Bill Jones III

Jeanne Kaufmann

King & Prince Beach Hotel

Tara and Stephen Kinney

Janice Lamattina

Deb Luginbuhl

Claire Hughes and James Lynch

Meredith Magnus

Military Officer's Association of America - Kings Bay Chapter

Richard W. Moore

William Mounts

Susan and Don Myers

William A. Parker

Pilot Club of Brunswick
 Jane M. Prendergast
 Sybil Ralston
 Mimi and John Rogers
 Marsha Rooks
 Bert Roughton
 Kathleen and Michael Scherneck
 Martha K. Shelhoss
 Susan Shipman and Mark Jicha
 Barbara Smith
 Scott K. Steilen
 Hillary Stringfellow
 TD Ameritrade Clearing
 John and Frances Teel
 Thomasville National Bank
 Catina Tindall
 Robyn and Lance Turpin
 Jason Umfress
 Thomas Walden
 William T. Webb
 Scott Williamson
 Susan and David Zimmerman

Partners

\$500+

Margaret A. Amstutz
 Anonymous
 Jan Auffenberg
 Ashley H. Barnes
 Victoria S. Bell
 Ida P. Benton
 Thomas N. Chewning

Lillian Clarke
 Mike Cook
 Pat Hodnett Cooper
 Marguerite I. Crews
 Custom Polymers
 Patricia M. Cuthbert
 Leigh Deese
 Delta Sigma Theta Sorority, Inc.
 Pamela Devenney
 Diamond Glass Company, Inc.
 Thomas J. Fletcher
 John R. Flood
 Faye Foster
 Anne L. Giardino
 Carlton Gilchrist
 Carol L. Goodman
 Nancy H. Green
 Terral Harris
 Bob Harsh
 Patricia M. Heeg
 Valerie A. Hepburn and David Hayes
 Cheryl Hoback
 Hoven Family Foundation
 Interdenominational Sunday School Council
 John A. Tuten & Associates Inc.
 Michelle R. Johnston
 Nancy Kaufman
 Anne M. Kitchin
 Abra W. Lattany-Reed
 Abigail B. Ledbetter
 Lisa Lesseig

Liberty Roll-Offs & Recycling
 Sheila Loggins
 Nancy Ludwig
 Robert E. Lynch
 James R. McBrier
 John A. McSherry
 Malinda Mortin
 Jim P. Parker
 Parker's Village
 PB2 Foods, Inc.
 Angela and Daren Pietsch
 Carl Rooks
 Barbara B. Saxe
 Scanlon ADR Services
 Scarboro Oxygen Services, Inc.
 Sea Island Gardening Group
 John L. Simms
 Nancy G. Simms
 Janet Singleton
 Ruth G. Snellings
 South Coast Bank & Trust
 Dan Speight
 Patricia and James Stahl, Jr.
 Nancy Steele
 Sharon S. Stribling
 Sweat's Furniture, Inc.
 Debra Timmerman
 Margaret J. Wagner
 Laura Wallace
 Gayle and Dennis Winchester

Mates **\$250+**

Susan R. Ashburn
Atlantic Ship Bunkering, Inc.
Cynthia Atwood
J. Alexander and Cynthia Atwood
David L. Billingsley
John C. Boney
Susan and Robert Burruss
Claire A. Campbell
Lance Carluccio
Glenn T. Carson
Ellen Dunn
Jeriann J. Edwards
Epworth By The Sea
Gilbert, Harrell, Sumerford and Martin, P.C.
Paul Hammond
Jean Harrell
Laura D. Jackson
Dennis M. Kerrigan
Claus-Peter Kolln
Gail and Scott Ledbetter
Sharon B. Lee
LFC Interior Designs, LLC
Jacqueline F. Lyons
Dean Mackey
Don H. Mathews
Robert F. McCullough
Jan and Larry Nicholson
Charles Reeves
Donald C. Revels
Richard Robinson

Sea Haven Investment Company
G. A. Steadman
Brooke and Rees Sumerford
Janet Torrance
Judith K. Vallee
Andrea W. Wallace
Lydia Watkins
Janine S. Weller
Zion Baptist Church

Friends **Up to \$249**

19th Hole Package Store
William G. Acree
Adelaide's Paint & Decor
Delores Alford
Amazon Smile
Cash Anonymous
Michael Aspinwall
Charlie and John Atkinson
Linell Bailey
Sherrie T. Baker
Charles Bankston
James K. Bankston
Mike Bankston
Chuck Barber
Barber's Body Shop, Inc.
Keith E. Belcher
Kristine Bennett
E. E. Benson
James Benton
Anne C. Boardman
Sandy Brantly

Susan Bratten
William O. Brewer
Brogen's Inc.
Heather A. Brown
Sandra and William Brunson
Kimberly Burgess
Butch Paxton Insurance Agency Inc.
Heather Farley and Michael Butcher
Edward L. Carpenter
Leslie Carroll
Valeska M. Carter
Causeway Properties, LLC.
Holly A. Christensen
City Market, Inc.
Cloud Resources Group, Inc.
Mildred M. Cody
E. Dargon Cole
Willard Collins
Stephanie Conner
LaVerne Cooper
Adrian M. Coote
Crabdaddy's Seafood Bar & Grill
Ann R. Crowther
Emily and Lee Davenport
Mark Davis
Sandra Blaschke Davis
David W. Deiters
Aerial Dickerson
Beth and Bill Downey
Janice N. Downie
Debbie and Ian S. Easton
Patricia M. Emery

Rick K. Ezell
Charles Fell
Crystal R. Ferrier
Deborah Filipovitch
Kevin Fisher
Robin D. Flores
J'Nell Ford
Thomas W. Fuller
James Fullerton
Genie Gadilhe Blough
F. Alton Garrett
Dawana Gibbs
Glass-N-Up, Inc.
James E. Goodis
Charlotte Greenwood
Salleigh Grubbs
Charles E. Grueser
Emily Withrow Guffin
Robert P. Guyton
H & H Service Store, Inc.
Clara and Edmund Hackney
Andy Hall
Michelle Ham
Marjorie K. Hambright
Joseph Hamilton
James M. Hannaford
Ronald V. Harding
W. F. Harper
Wendell Harrell
H. H. Hart
Cornell L. Harvey
William T. Harvey

Jennifer Hatchel
Sally and Edward Hawie
Carolyn and Bud Hearn
Paul Hearn
Jane and Kevin Heeney
Cammie Heinhold
Hinnants in Common, LLC
Carter Holbrook
Debra Holmes
Venus Holmes
James Holt
Elizabeth and Gerald Homans
Dawne Hudson
J&J Tire
J.C. Strother Company
Jay Jenkins
John Jenkins
E. G. Johnson
Jotham Johnson
Judith Johnston
Ashley Jones
Angela Jordan
K Revels Events, LLC
Michael Kane
Daniel Kelly
Lynda L. Kennedy
Rachel A. Kernes
Stephanie Kezar
King's Colonial Ford
Tina and Bill Kirby
Judy and Thomas Kitchin
Thomas W. Klammer

Carolyn Knapp
John Knight
J. Reese Lanier
Michael W. Latham
Glonda and Gregory Lattany
Bev Latvala
Sheila M. Ledford
Jeffery LeMieux
Lesley Leonard
Joan A. Lewis
Stewart Long
Dionne Lovett
Nancy and John Ludwig
Gladys Lyde
Laura Lynch
Robert S. Lyon
Janet O. Mackintosh
Malone Electric, Inc.
Kimberly Mannahan
Rebecca C. Marshall
Marshside Grill, LLC
Julie T. Martin
Karen O. Martin
Peter W. Martin
B. L. May
Judith May
Pamela J. Mays
Bobby Mayson
Frances McCrary
McGinty-Gordon & Associates
McInnis Electric Company
Betty J. McKenzie

John W. McKenzie
 Carl McManamy
 William J. McNulty
 Melinda N. Meighen
 Steven N. Melnyk
 Eric Meyer
 Leah Mihm
 Ryan Montoya
 Amanda S. Moore
 Eunice M. Moore
 Charles T. Moran
 Michael Morris
 Patricia Morris
 Lorraine Moyer
 Nancy and Micheal Muldowney
 James Mullis
 Deborah Murphy
 Mutual Funds Investment Litigation-Nations
 Sub-Track
 Jeri L. Nash
 William A. Norrett
 Betty Oliver
 Rebecca O'neal
 Don T. O'Quinn
 Gordon Partin
 Jody Paul
 Sandra Pearce
 Pease Construction Company
 Lindsey A. Phillips
 Rob Ploeger
 William D. Ploeger
 Annie C. Polite

Jack Powell
 Nicole Powell
 Purnell & Associates, Inc.
 R.L. Bunkley Enterprises
 Bonnie and Daryl Rabert
 Nicole Ransom
 Vicki B. Ream
 Turand David Reese
 Barney Riley
 Olivia B. Rollins
 John C. Ross
 Carol and Clifford Rountree
 Carew F. Rowell
 Richard A. Rymer
 Linda Sackett
 Roger Sanders
 Schell & Hogan CPAs
 Claudia H. Schlottman
 Nicolette Schmauch
 C. R. Schmitz
 Terryl B. Schneider
 Jennifer Schoof
 Regina F. Scotti
 Seaside Drugs, Inc.
 Sharon Sellers-Clark
 Rebecca and Gary Sharpe
 John and Lou Ann Silva
 Bryan D. Sipe
 John Sipe
 Charles H. Sipple
 Skipper's Fish Camp
 James Smartt

Susan and Clyde Smith
 Jean Gowen Smith
 Lisa Smith
 Willou and Bill Smith
 St. Simons Island Dental Associates
 Patrizia A. Stahle
 Mitchell L. Stephens
 Richard Stephens
 Victoria L. Stewart
 Steven Strickland
 Paul E. Sullivan
 Erma T. Summers
 T Con, Inc.
 Brenda L. Taylor
 Joe Taylor
 The Darkroom
 Versie Thomas
 Jennifer Thompson
 Andrew Tipaldos
 Connie L. Toler
 Ken Tollison
 Genevieve and Randal Torrey
 John R. Tullos
 The Van Dora Law Firm, LLC
 Cheryl M. Van Dyke
 German Vargas
 William Varn
 Elizabeth Walsh
 Mark Warren
 Raymond M. Warren
 Brian Weese
 Sherie M. Welch

Thomas White
 Jacqueline Williams-Bryant
 Thornton Willingham
 Christy Lynn Wilson
 G. Michael Wommack
 Evelyn and Royce Wood
 Phillip Worthington
 Dan H. Wright
 Walter Wright
 Elizabeth Wurz
 Michael Younce
 Renren Zhao

Gifts Given to Honor Others

John and Frances Teel
In Honor of Faye Barber
 John and Frances Teel
In Honor of Tiggie Benefield
 Phillip Worthington
In Honor of Bob Watson
 Sandy Brantly
 Paul Hammond
In Honor of Billy Brewer
 Betty Oliver
In Honor of the Glynn Academy Class of 1965
 Sandra Blasche Davis
In Honor of Carole Cofer
 Williard Collins
In Honor of Terri B. Collins
 John and Frances Teel
In Honor of Gordon R. Davis
 Cynthia Atwood
 Valerie A. Hepburn
In Honor of Jack A. Dinos

John and Frances Teel
In Honor of Orion L. Douglass, Jr.
 Dawne Hudson
In Honor of Joseph Fennell
 Deborah Filipovitch
In Honor of Molly Fletcher
 Jack Kilgore
In Honor of Paul Hammond
 Emily Boyle
 Holly A. Christensen
 Kristen A. Bernard and Rick K. Ezell
 Kay S. Hampton
 Stephanie Kezar
 Sheila M. Ledford
 B. Lewis May
 Jody Paul
In Honor of James M. Hannaford
 John Jenkins
In Honor of John W. and Helen W. Jenkins
 John and Frances Teel
In Honor of Arnetia Maasha
 Bob Harsh
In Honor of Molly Fletcher & T. Mates
 Valerie A. Hepburn
In Honor of Diana M. Murphy
 Elizabeth Walsh
In Honor of John and D. Raulerson
 Chuck Barber
In Honor of Scott Reynolds
 Marsha Rooks
In Honor of Carl Rooks
 John and Frances Teel
In Honor of Al Spivey
 J. Greer Brown
 Susan and David W. Deiters, Jr.
 Salleigh Grubbs
 Clara Hackney
 Edward J. Hawie
 Valerie A. Hepburn

Shell & Hogan CPAs
 Charles H. Sipple
 Lisa Smith
 Willou Smith
 Rees M. Sumerford
 John and Frances Teel
 Genevieve and Randall F. Torrey, Jr.
 William Varn
In Honor of William F. Torrey
 Judith May
In Honor of Jane H. Townsend
 Nicole Powell
In Honor of Azure Werner
 Thomas White
In Honor of Kyra White
 Sandra Pearce
In Honor of Tamaira Williams

2018 Fiscal Report

2018 SUMMARY

BALANCE DECEMBER 31, 2017

(Audited) \$17,263,268

Cash Contributions and
Other Operating Revenue \$723,415

Includes fulfillment of prior year pledge obligations

Net Increase/(Decrease) in Pledges \$25,307

Earnings/Losses (\$214,391)

PROGRAM DISBURSEMENTS

Academic and Institutional Support \$314,130

Student Support and Scholarships \$988,091

Foundation Operations \$125,204

Total \$1,427,425

BALANCE DECEMBER 31, 2018

(Audited) \$16,370,174

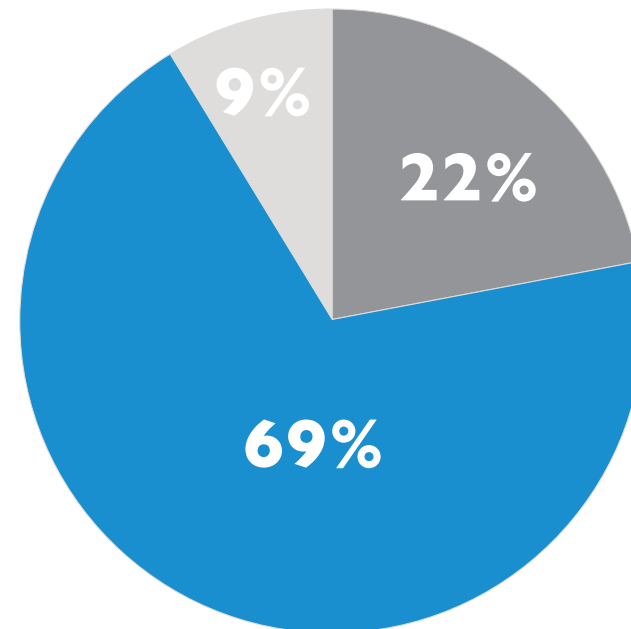
BREAKDOWN OF FUND BALANCE

Unrestricted \$3,476,693

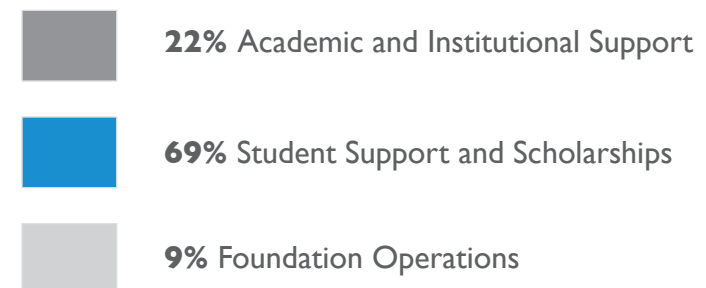
Donor Restricted – Purpose \$5,645,807

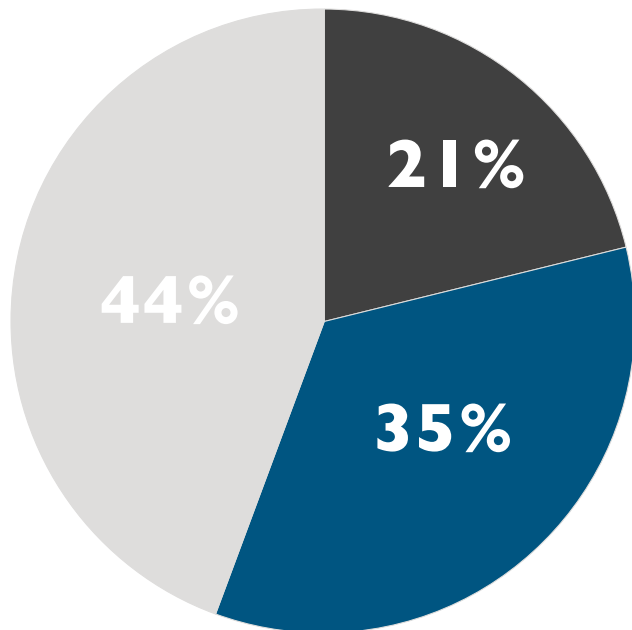
Donor Restricted – Perpetual \$7,247,674

TOTAL \$16,370,174

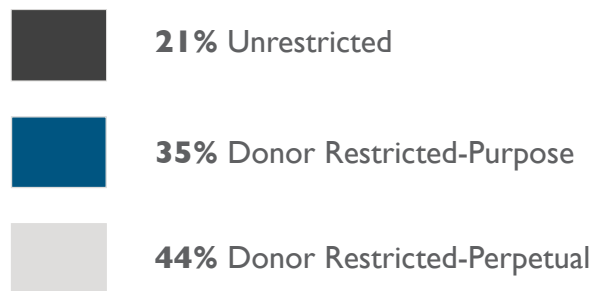


PROGRAM DISBURSEMENTS





BREAKDOWN OF FUND BALANCE



Unrestricted: Funds for program expenses having no restrictions.

Donor Restricted-Purpose: Funds for program expenses restricted to a specific purpose and met by the passage of time or other events specified by donor.

Donor Restricted-Perpetual: Funds to be held in perpetuity to generate earnings for program expenses.









Brunswick Campus



Camden Center

COLLEGE *of* COASTAL GEORGIA FOUNDATION

One College Drive
Brunswick, Georgia 31520
(912) 279-5702

ccga.edu/foundation