

Campus Center

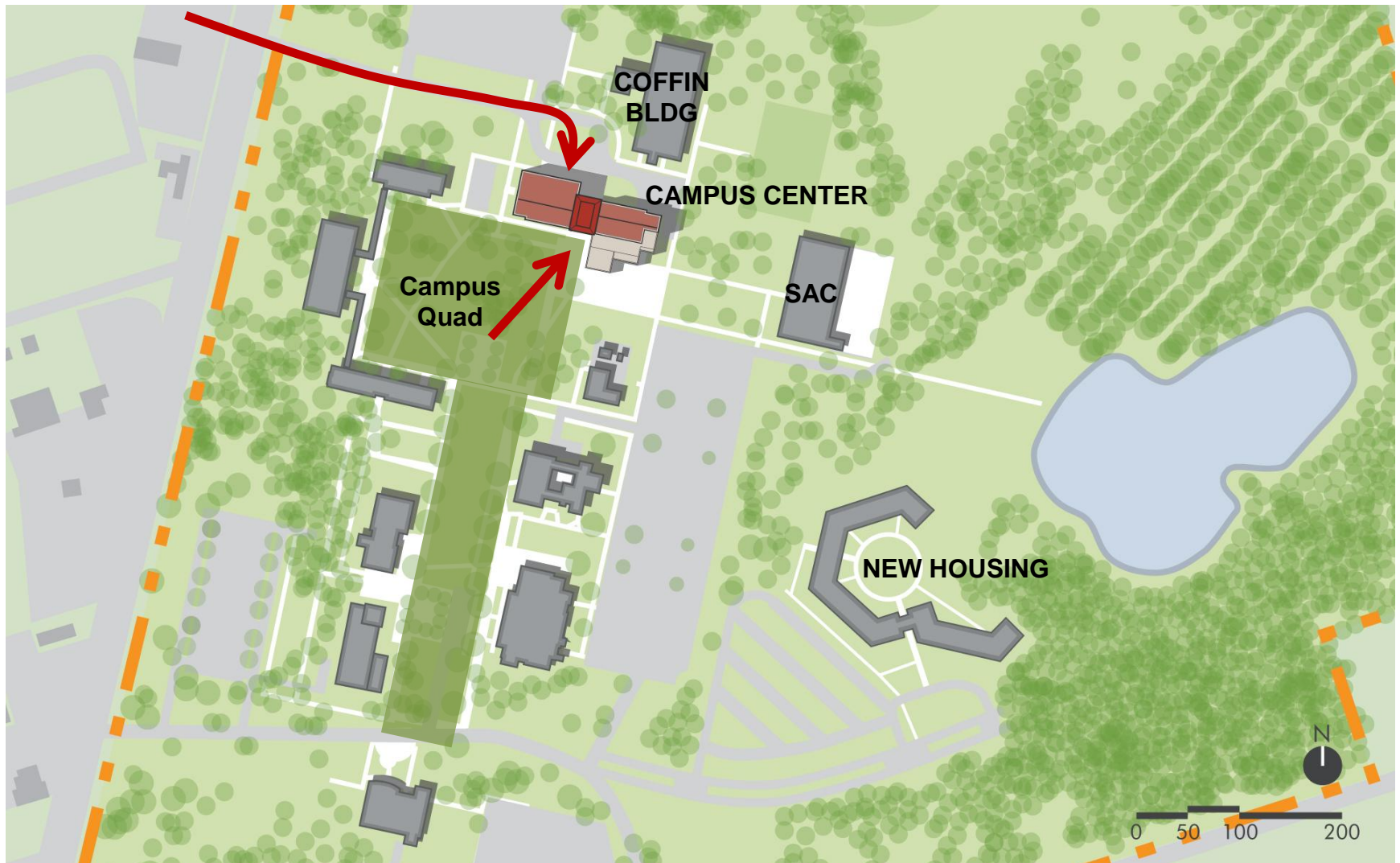
COLLEGE OF COASTAL GEORGIA | BOR DESIGN REVIEW

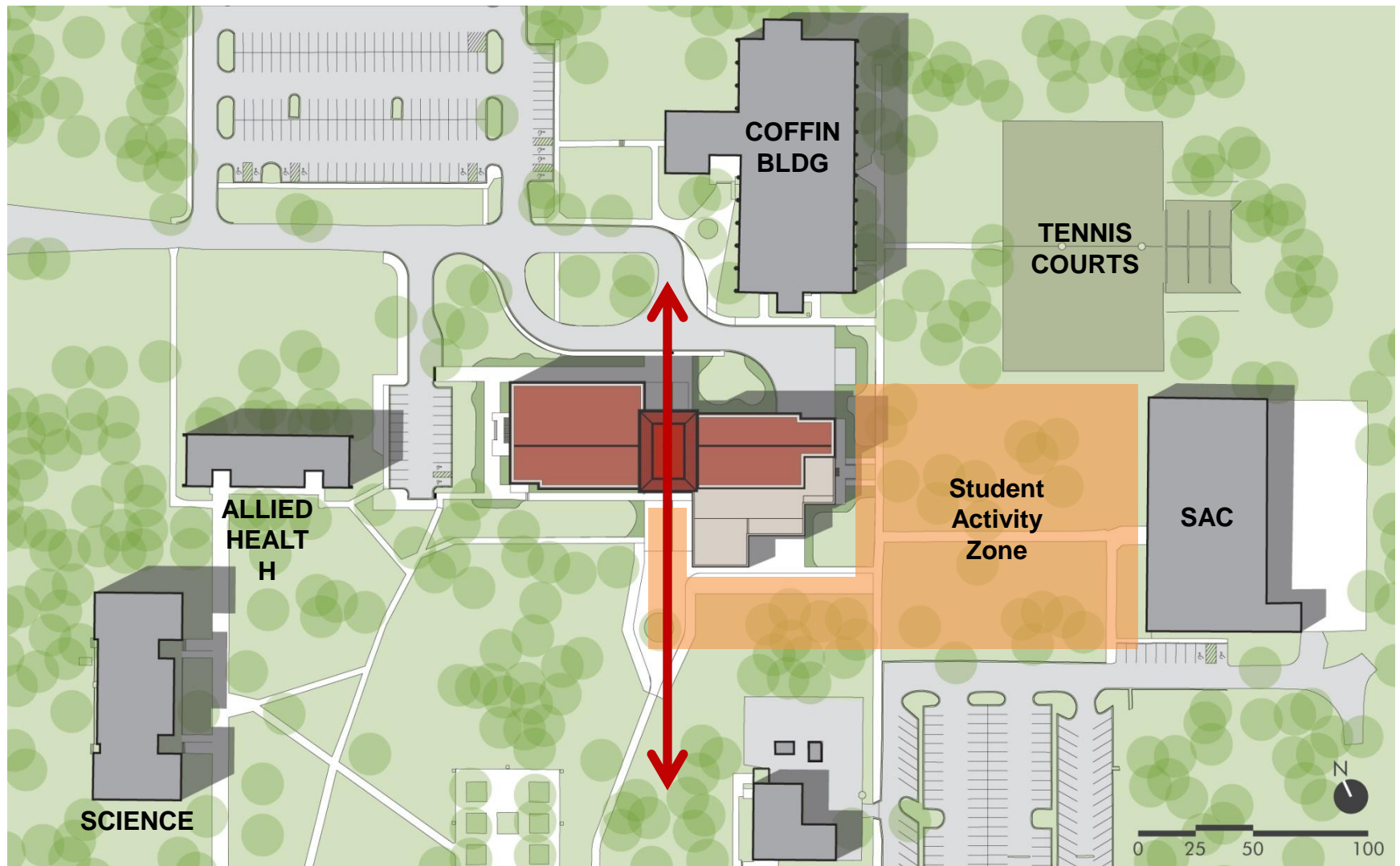
01 February 2010

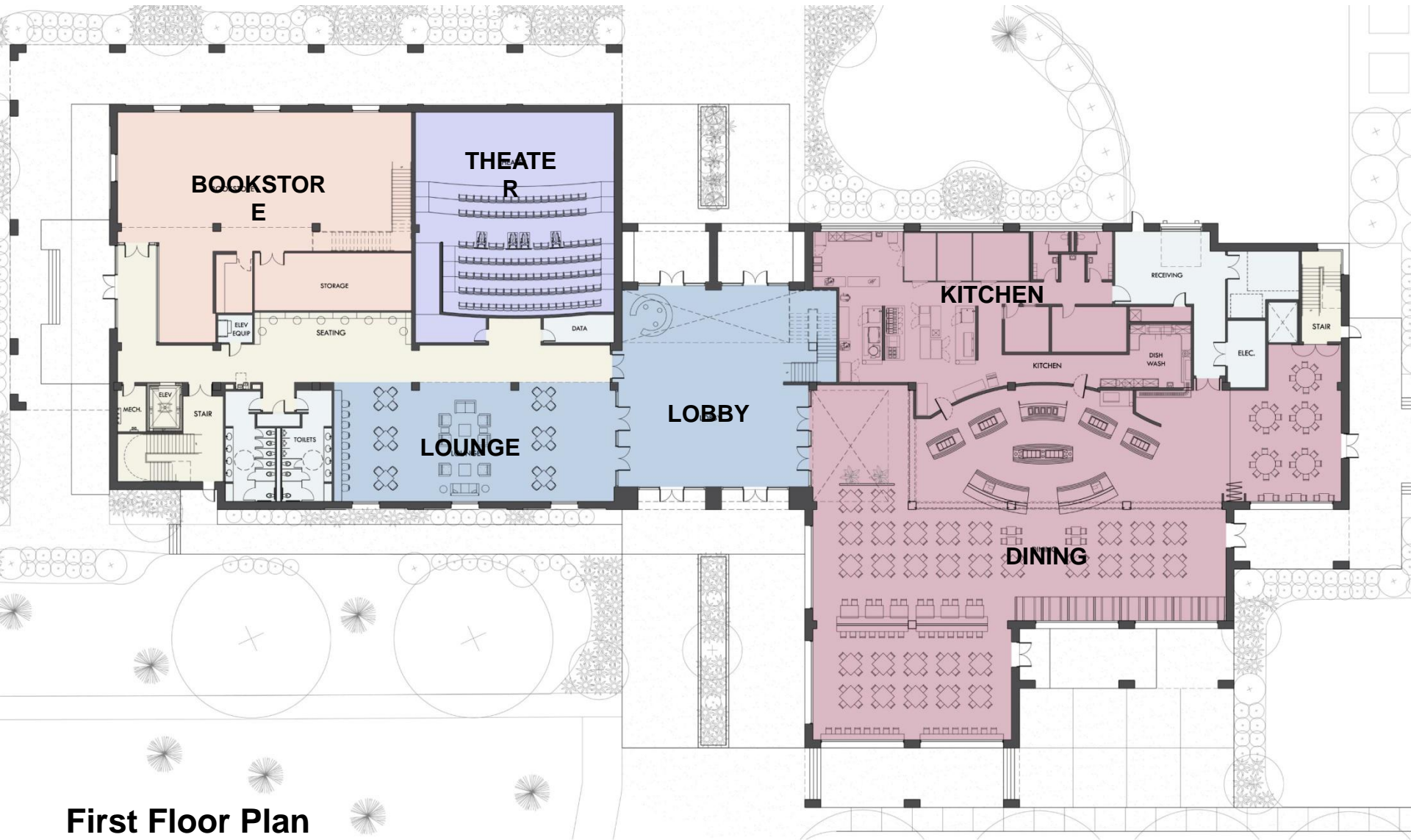
Perkins Eastman

- Design
- Project Budget
- Schedule & Milestones
- Due Diligence Package

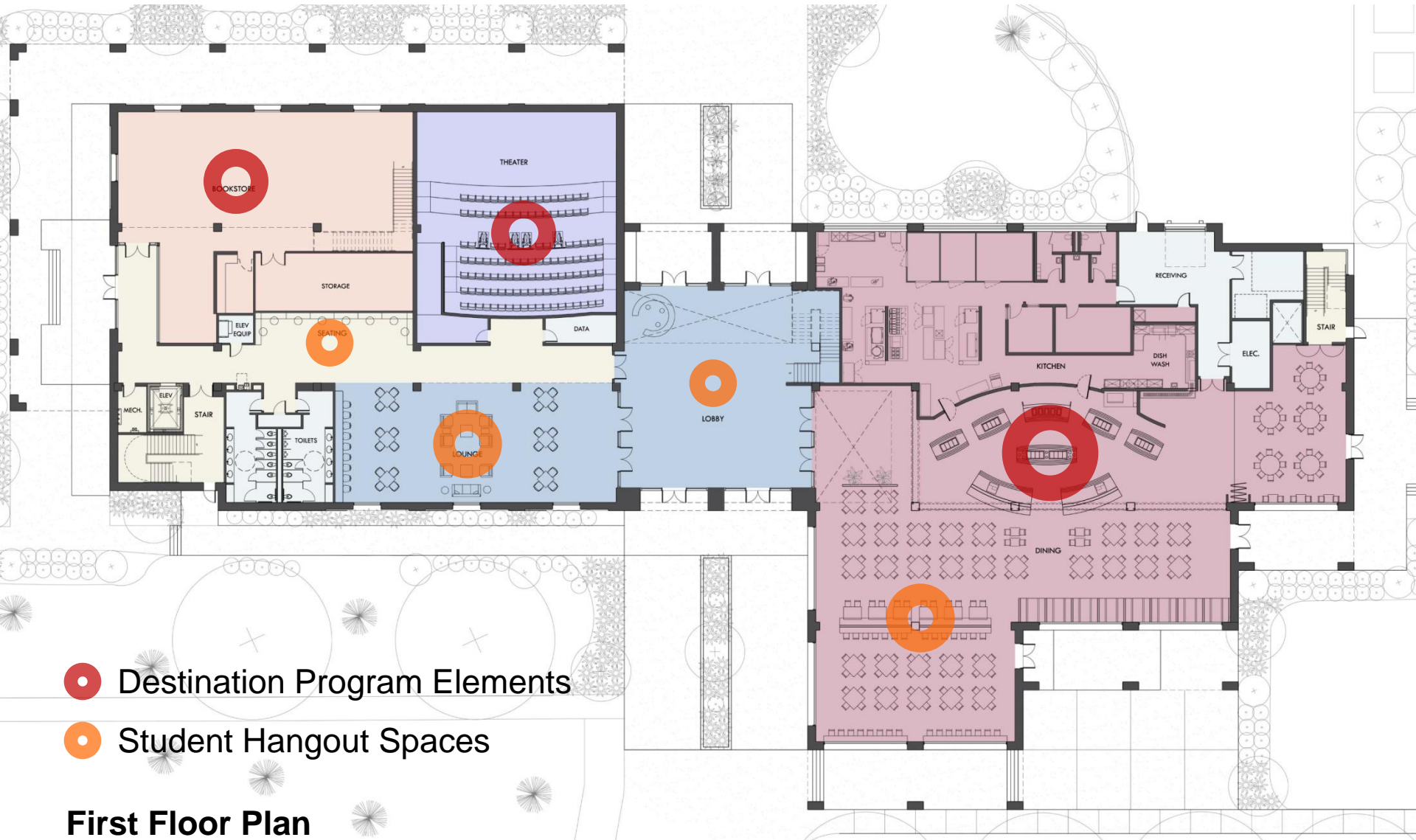








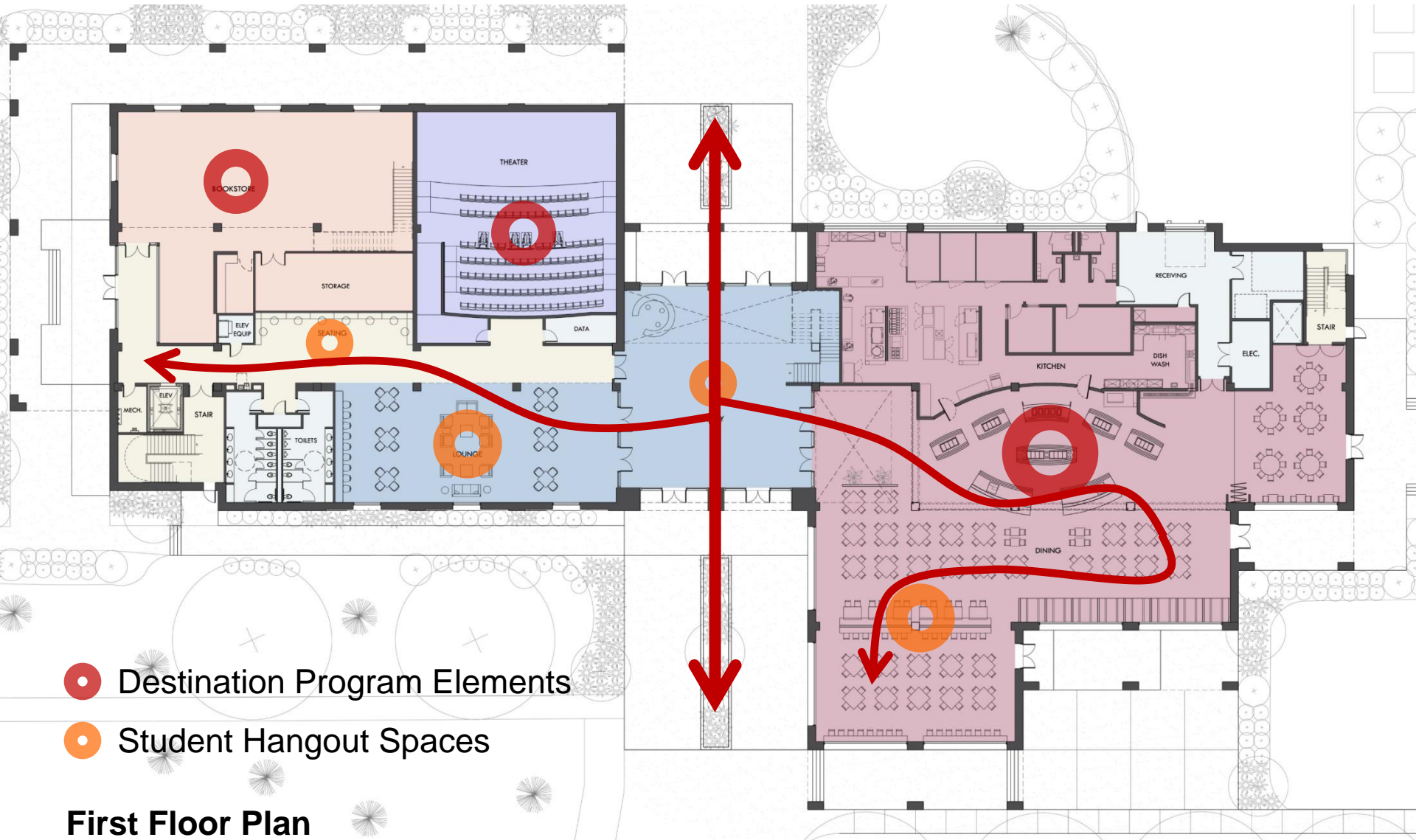
First Floor Plan



● Destination Program Elements

● Student Hangout Spaces

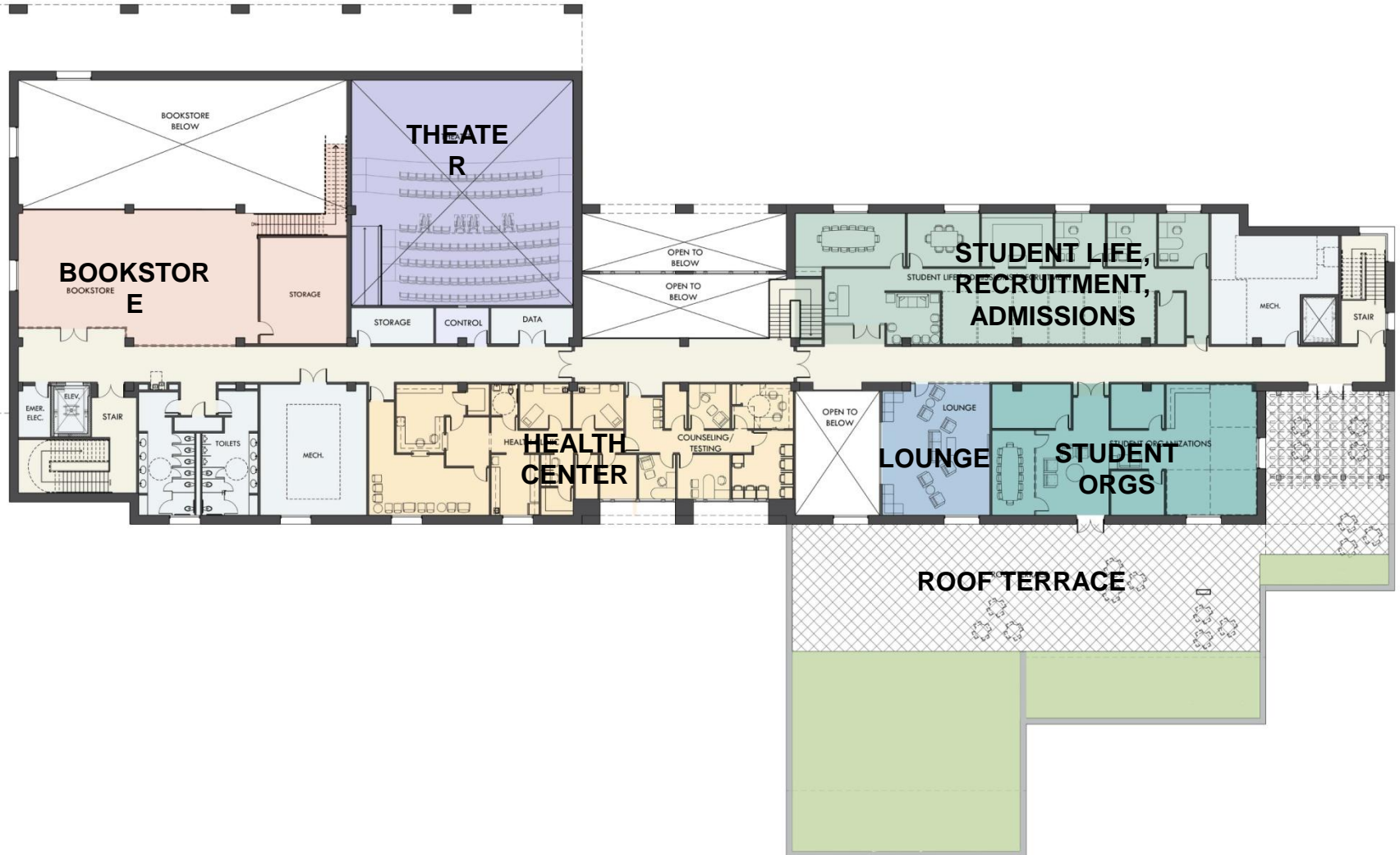
First Floor Plan



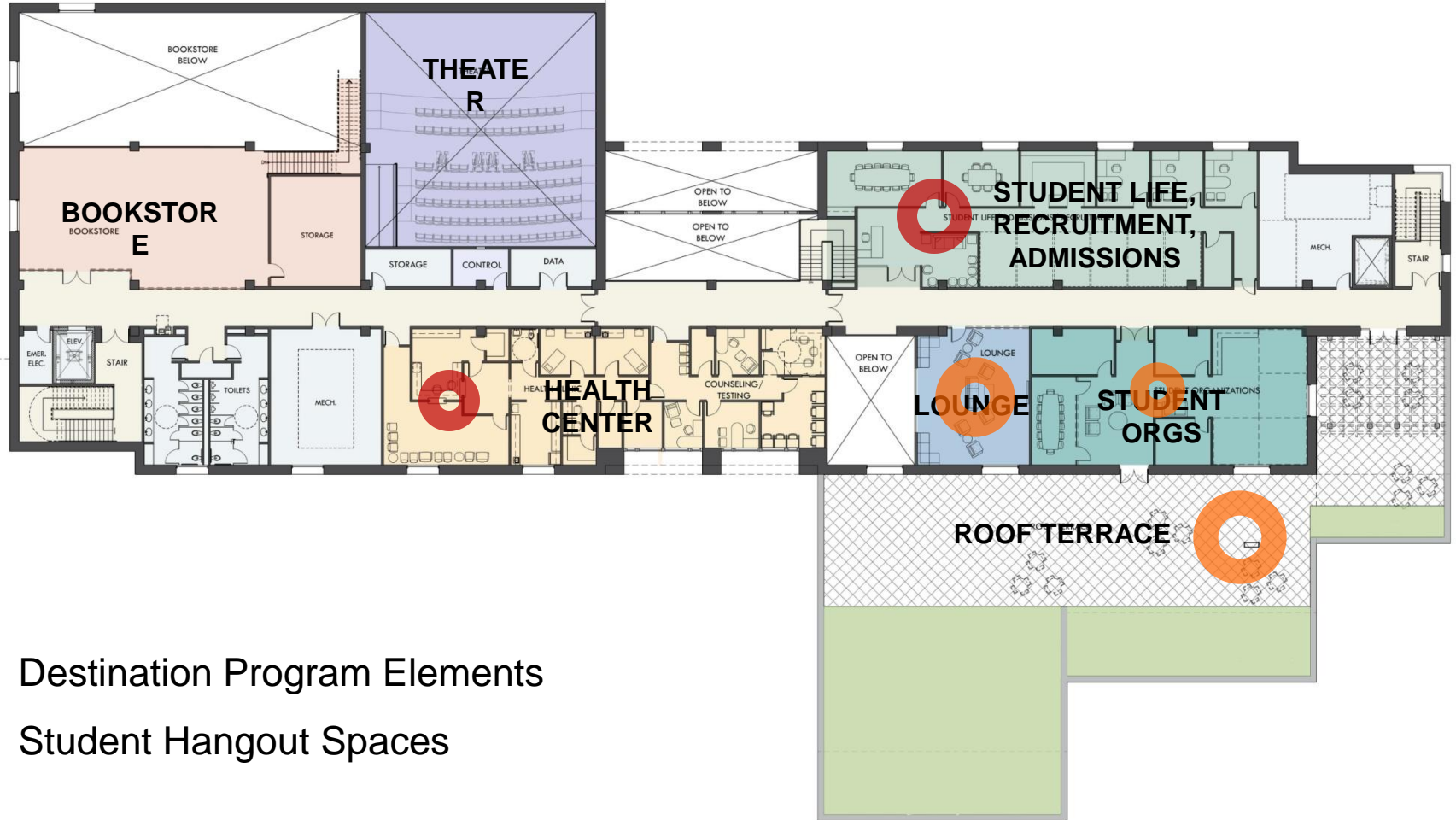
● Destination Program Elements

● Student Hangout Spaces

First Floor Plan



Second Floor Plan



● Destination Program Elements

● Student Hangout Spaces

Second Floor Plan

- View of the Theater



▪ North Elevation



▪ South Elevation



- East Elevation



- West Elevation





NORTH



EAST



SOUTH



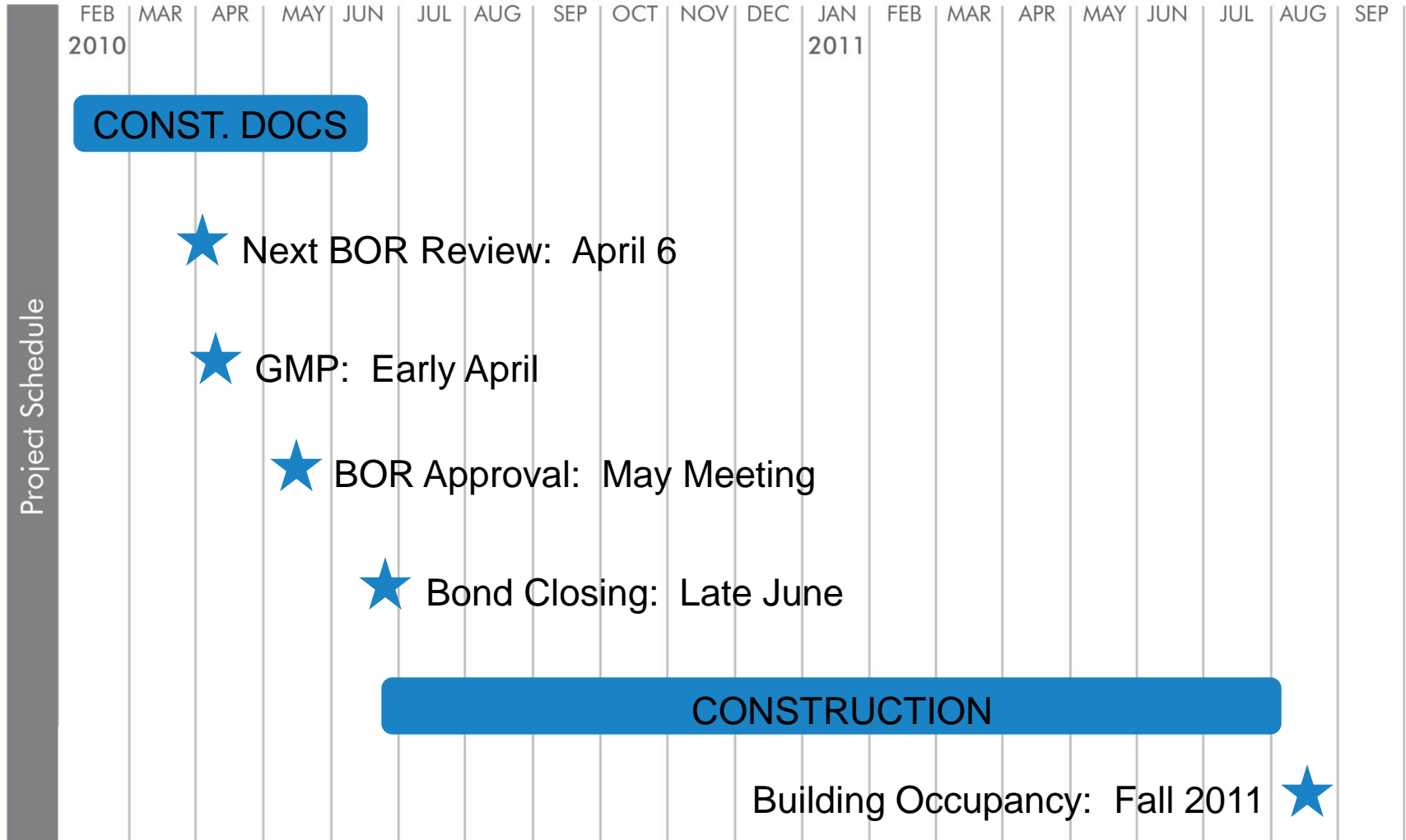
WEST

- Project Budget:
 - \$12.0 M overall
 - \$9.2 M hard cost

- Contractor Estimates /
Value Engineering and Alternatives

- Food Service Equipment
- FF&E Budget





- Survey
 - Lease Limits
 - Construction Limits

- Geotech
- ESA
- GEPA

- Draft Proformas



Campus Center

COLLEGE OF COASTAL GEORGIA | BOR DESIGN REVIEW

01 February 2010

Perkins Eastman